



HEBDEN

POLLUTION INCIDENT RESPONSE MANAGEMENT PLAN

This document is UNCONTROLLED when printed

Document Title	Pollution Incident Response Management Plan			Page 1 of 21
Document ID	HEB-PRO-ENV-ERP-001	Version	V-08	
Authorised By	J.CLARKSON	Issue Date	15.11.2021	

Contents

1.0	PURPOSE	3
2.0	DEFINITIONS	3
3.0	REFERENCES	3
4.0	ENVIRONMENTAL PROTECTION LICENCE (EPL) DETAILS	4
5.0	POLLUTION INCIDENT – PERSON/S RESPONSIBLE	4
6.0	NOTIFICATION OF RELEVANT AUTHORITIES	5
7.0	NOTIFICATION AND COMMUNICATION WITH NEIGHBOURS AND THE LOCAL COMMUNITY	5
8.0	DESCRIPTION AND LIKELIHOOD OF HAZARDS	6
9.0	PRE-EMPTIVE ACTIONS TO BE TAKEN	11
10.0	INVENTORY OF POLLUTANTS	12
11.0	SAFETY EQUIPMENT	12
12.0	MINIMISING HARM TO PERSONS ON THE PREMISES PRIOR TO, DURING AND DIRECTLY FOLLOWING AN INCIDENT	12
	12.1 Evacuation procedure during a pollution incident	13
13.0	MAPS	14
14.0	ACTIONS TO BE TAKEN DURING OR IMMEDIATELY AFTER AN INCIDENT	14
15.0	STAFF TRAINING, TESTING AND UPDATING THE PIRMP	16
16.0	RECORD RETENTION AND AVAILABILITY	16
17.0	REVISION / TESTING HISTORY	17
	Attachment 1 PIRMP Test Checklist	18
	Attachment 2 PIRMP Drill History	19
	Attachment 3 Map: Hebden Quarry	20
	PERSONNEL DECLARATION	21

This document is UNCONTROLLED when printed

Document Title	Pollution Incident Response Management Plan			Page 2 of 21
Document ID	HEB-PRO-ENV-ERP-001	Version	V-08	
Authorised By	J.CLARKSON	Issue Date	15.11.2021	

1.0 PURPOSE

Hebden Quarries Pty Limited (Hebden Quarries) holds an Environment Protection Licence with the NSW Environment Protection Authority (EPA) for Hebden Quarry located at Lot 5 Hebden Road, Hebden NSW 2330. As per the Protection of the Environment Operations Act 1997 (the POEO Act), the holder of an Environment Protection Licence must prepare, keep, test, and implement a pollution incident response management plan (PIRMP) that complies with Part 5.7A of the POEO Act in relation to the activity to which the licence relates.

If a pollution incident occurs in the course of an activity so that material harm to the environment (within the meaning of section 147 of the POEO Act) is caused or threatened, the person carrying out the activity must immediately implement this plan in relation to the activity required by Part 5.7A of the POEO Act.

A copy of this plan must be kept at the licensed premises, or where the activity takes place in the case of mobile plant licences and be made available on request by an authorised EPA officer and to any person who is responsible for implementing this plan.

Parts of the plan must also be available either on a publicly accessible website, or if there is no such website, by providing a copy of the plan to any person who makes a written request. The sections of the plan that are required to be publicly available are set out in clause 98D of the Protection of the Environment Operations (General) Regulation 2009.

NOTE: This plan must be developed in accordance with the Protection of the Environment Operations Act 1997 and the Protection of the Environment Operations (General) Regulation 2009.

Licensees should also refer to the EPA's Guideline: Pollution incident response management plans.

2.0 DEFINITIONS

Pollution Incident - an incident or set of circumstances during or as a consequence of which there is or is likely to be a leak, spill or other escape or deposit of a substance, as a result of which pollution has occurred, is occurring or is likely to occur. It includes an incident or set of circumstances in which a substance has been placed or disposed of on premises, but it does not include an incident or set of circumstances involving only the emission of any noise.

Material Harm - involves actual or potential harm to the health or safety of human beings or to ecosystems that is not trivial, or results in actual or potential loss or property damage of an amount, or amounts in aggregate, exceeding \$10,000 (or such other amount as is prescribed by the regulations).

3.0 REFERENCES

- Protection of the Environment Operations Act 1997
- Protection of the Environment Operations Regulation (General) 2009
- Environmental Guidelines: preparation of pollution incident response management plans (NSW EPA 2020).
- EPA PIRMP template for premises-based licensees and mobile plant licensees

This document is UNCONTROLLED when printed				
Document Title	Pollution Incident Response Management Plan			Page 3 of 21
Document ID	HEB-PRO-ENV-ERP-001	Version	V-08	
Authorised By	J.CLARKSON	Issue Date	15.11.2021	

4.0 ENVIRONMENTAL PROTECTION LICENCE (EPL) DETAILS

Name of licensee (including ABN): Hebden Quarries Pty Limited

EPL number: 7390

Premises name and address: Hebden Quarry, Lot 5 Hebden Road, Hebden NSW 2330

Company or business contact details - Name: Matthew Criss
 Position or title: Divisional Manager
 Business hours contact number: 0427 968 950
 After hours contact number: 0427 968 950
 Email: mcriss@sce-aust.com

Website address: <https://www.sce-aust.com/>

Scheduled activity / activities on EPL: Extractive Activities

Fee-based activity/activities on EPL: Land-based extractive activity (>100000-500000 T extracted, processed or stored)

5.0 POLLUTION INCIDENT – PERSON/S RESPONSIBLE

PIRMP activation / Notifying relevant authorities / Managing response to pollution incident –

Name of person responsible: Jeff Clarkson
 Position or title: Quarry Manager
 Business hours contact number: 0407 925 554
 After hours contact number: 0407 925 554
 Email: jclarkson@sce-aust.com

The following table outlines the other personnel responsible for the site that can be contacted 24/7:

Title	Name	Contact
Divisional Manager	Matthew Criss	0427 968 950
Managing Director	Michael Aubin	0413 742 814
HSEC Coordinator	Stephanie Blackwood	0409 467 561

The Weighbridge may also be contacted during site operation hours:

Title	Name	Contact
Weighbridge	Renee Blakemore	02 6576 1003

This document is UNCONTROLLED when printed

Document Title	Pollution Incident Response Management Plan			Page 4 of 21
Document ID	HEB-PRO-ENV-ERP-001	Version	V-08	
Authorised By	J.CLARKSON	Issue Date	15.11.2021	

6.0 NOTIFICATION OF RELEVANT AUTHORITIES

Relevant authorities to be notified in the case of a pollution incident that causes or threatens to cause material harm to the environment include:

<i>Emergency services - Police, Fire, Ambulance:</i>	000
<i>Emergency services - Fire and Rescue NSW:</i>	1300 729 579
<i>EPA:</i>	131 555
<i>Nearest public health unit – Hunter New England Health:</i>	02 4924 6477
<i>Safework NSW:</i>	131 050
<i>Local authority – Singleton council:</i>	02 6578 7290
<i>NSW Resource Regulator:</i>	1300 814 609

Depending on the pollution incident, the following organisations or agencies may require notification:

<i>Hunter Water:</i>	1300 657 000
<i>Department of Planning, Industry and Environment:</i>	1300 305 695
<i>Roads and Maritime Services:</i>	132 701

7.0 NOTIFICATION AND COMMUNICATION WITH NEIGHBOURS AND THE LOCAL COMMUNITY

Owners or occupiers of premises in the vicinity of the licensed premises include:

Various neighbours as outlined in the blast contact list.

The Quarry Manager will assess the severity of the incident with regard to the impact on neighbouring properties, this includes considering:

- Does the pollution incident have the potential to affect one or more neighbouring properties?
- How will it affect them (including long and short-term effects)?
- What actions need to be taken by the neighbouring properties to protect them from harm?

The Quarry Manager, or their delegate, will contact neighbouring properties via phone or face to face with an early warning immediately if the neighbouring property is directly affected by the incident and/or needs to complete actions to ensure the safety of their premises and any persons on their premises. The Quarry Manager, or their delegate, will provide regular updates to the directly affected neighbouring properties via phone or face to face and once the incident has been contained, the 'all clear' will be communicated to them.

The Quarry Manager, or their delegate, will contact neighbouring properties not directly affected by the incident via phone or face to face within 2 hours of the incident occurring.

The Quarry Manager, or their delegate, will contact the neighbouring properties with follow up communications either face to face or via phone calls or face to advise them of the conclusions of the incident investigation, including root cause and corrective actions to ensure the incident does not occur again. The follow up communication will be made once the incident investigation has been completed or sooner if information needs to be relayed urgently.

This document is UNCONTROLLED when printed				
Document Title	Pollution Incident Response Management Plan			Page 5 of 21
Document ID	HEB-PRO-ENV-ERP-001	Version	V-08	
Authorised By	J.CLARKSON	Issue Date	15.11.2021	

If any specific information is required to be provided to the community so it can minimise the risk of harm, this information will be provided to the community via the company website and social media platforms.

8.0 DESCRIPTION AND LIKELIHOOD OF HAZARDS

Hebden Quarry is not a classified hazardous facility, however, there are substances and activities undertaken on the site that if not controlled adequately could pose a risk to the environment and/or human health. The site risk register (*HEB-REG-RIS-001- Risk Register*) provides a description of the hazards to human health or the environment associated with the activity to which the licence relates. The current environmental risk register, which makes up a part of the site risk register is shown in *Table 2* below.

The likelihood of any such hazards occurring, including consideration of any conditions or events that could, or would, increase that likelihood are assessed in accordance with the *Hebden Quarry Matrix* shown in *Table 1* below.

Potential incidents identified include:

- Air* - Escape of significant dust or smoke to atmosphere
- Water* - Escape of significant sediment, oil, grease, fuel off site to a watercourse
- Land* - Escape of significant sediment, oil, grease, fuel off site to land

The EPA environmental risk level of the site is 1. The controlled nature and permitted operation of the site currently presents a low risk. Risk assessments have determined the following residual risks for the identified potential pollution incidents:

- Air* - Moderate
- Water* - Low
- Land* - Low
- Noise* - Low
- Pollution for incidents or unplanned events* - Moderate

		High likely is it to be that bad?			
		E - Very likely Could happen any time	F - Likely Could happen sometime	G - Unlikely Could happen but very rarely	H - Very unlikely Could happen, but probably never will
How severe are consequences?	A - Permanent Environmental Damage on Community &/or Breach Client Environmental Licence Condition	1	1	2	3
	B - Permanent Environmental Damage Localised	1	2	3	4
	C - Environmental Damage leaving damage up to 12 months	2	3	4	5
	D - No damage or Environmental Impact, but cleaned up - No Scars	3	4	5	6

Risk Level	
High	1
Medium	2-3
Low	4
Very Low	5-6

Table 1: Hebden Quarry Environmental Matrix

This document is UNCONTROLLED when printed				
Document Title	Pollution Incident Response Management Plan			Page 6 of 21
Document ID	HEB-PRO-ENV-ERP-001	Version	V-08	
Authorised By	J.CLARKSON	Issue Date	15.11.2021	

Table 2. Hebden Quarry Environmental Risk Register (HEB-REG-RIS-001- Risk Register)

Hazard Ref.	Aspect of Business That May Adversely Impact the Environment and/or Harm Persons	Adverse Impact on the Environment and/or Persons	Uncontrolled			Controls Required to Eliminate or Reduce the Environmental Impact	Controlled			Emergency Response - In the event that controls fail	LAWWN	Functions Responsible	Task Review Period Months	Procedure Developed	Task Review Developed
			Consequence	Likelihood	Risk Rating		Consequence	Likelihood	Risk Rating						
1	Spillage of product on roads – client property or public property.	Potential impact to adjacent habitats or waterways. Loss of control may lead to a Non Conformance for customer and/or Hebden Quarries Material on roads could cause vehicle accidents and injury to persons involved	C	E	2	Tail gates of trucks regularly inspected Mudlocks fitted to tailgates where necessary Supervision of work areas and materials to monitor operations and risk of spillage Trucks not overloaded Loads secured and covered No loading of unsuitable truck bodies	C	H	5	Drivers trained to notify supervisor immediately of any spillage. Spillage cleaned up immediately under guidance of Quarry Supervisor or client. Daily Inspection checklist and audits	Land - Water - Air	Quarry Supervisor	N/A	Emergency Procedure	N/A
2	Dust and material driven off site caused by Hebden Quarry trucks. Fugitive Air Emissions	Contamination to air. Potential impact to adjacent habitats or waterways. Loss of control may lead to a breach to Hebden Quarries Environmental Licence. Loss of control may lead to a Non Conformance May lead to injury to person/s if inhaled i.e. lung damage, respiratory issues	C	E	2	Water cart used to suppress dust when required. Water sprays used on stockpile areas when required. Silt bags and sand bags to be positioned around storm water drains Activities which have the potential to generate dust have been identified. Audits and Inspections Review incident reports Equipment fit for purpose Training system in place All significant dust emissions are reported Respiratory PPE available on site and personnel trained in use Personnel on site encouraged to wear PPE during any dusty events when outside cabs of machines Personnel Health Monitoring Personnel Occupational Hygiene Monitoring	C	G	4	Drivers and operators trained to inform supervisor of any spillage. Drivers report all spillages to supervisor. Supervisor contains and cleans up spillages immediately. Daily Inspection Checklist and audits	Land - Air - Water	Quarry Supervisor	N/A		N/A
3	Bulk Diesel and Oil storage area for new and used tanks and drums	Potential for spill and ground contamination of surrounding area, potential to cause injury to persons that come into contact with spillage	C	G	4	Fully bunded area. Drums stored on bunded pallets Drums are stored away from the edge of bunding to prevent spills and leaks to areas outside of bunding Area fully under cover. Secure storage. Drained/inspected regularly. SDS* of all oils/grease etc. Appropriate PPE provided to personnel involved in spill clean up Personnel trained in spill response Refer to SDS of product if any injuries occur due to substance	C	H	5	Personnel trained in spill response. Spill equipment positioned in yard and sign posted	Land - Water	Quarry Manager	N/A	Emergency Procedure	N/A

This document is UNCONTROLLED when printed

Document Title	Pollution Incident Response Management Plan			Page 7 of 21
Document ID	HEB-PRO-ENV-ERP-001	Version	V-08	
Authorised By	J.CLARKSON	Issue Date	15.11.2021	

Hazard Ref.	Aspect of Business That May Adversely Impact the Environment and/or Harm Persons	Adverse Impact on the Environment and/or Persons	Uncontrolled			Controls Required to Eliminate or Reduce the Environmental Impact	Controlled			Emergency Response - In the event that controls fail	LAWWN	Functions Responsible	Task Review Period Months	Procedure Developed	Task Review Developed
			Consequence	Likelihood	Risk Rating		Consequence	Likelihood	Risk Rating						
4	Disposal Of Waste Material and Product. 1. Oil 2. Oil Filters 3. Tyres 4. Batteries 5. Coolant And Oily Water 6. Parts Cleaning Waste	Potential to contaminate the local environment. Potential breach to Hebden Quarries Environmental Licence. Potential to cause injury to persons that come into contact with waste material and product.	B	F	2	Oil and Grease is collected and contained. Disposed by Maintenance Contractor. Used oil filters collected/disposed of by Maintenance Contractor. Old and worn tyres are disposed of through supplier. Used batteries are collected/disposed of by Maintenance Contractor. Waste Coolant and Oily Water is collected and contained disposed of by Maintenance Contractor. Parts are cleaned over a drum. Waste is collected and of by Maintenance Contractor. Waste Metal is collected and disposed of in scrap metal bins. Contractor Management Systems Appropriate PPE provided to personnel involved in spill clean up Personnel trained in spill response Refer to SDS of product if any injuries occur due to substance	B	H	4	Personnel trained in spill response. Spill equipment positioned in yard and sign posted	Land - Water - Waste	Quarry Manager	N/A	N/A	N/A
5	Refuelling and general servicing activities at Hebden Quarry, plant serviced and refuelled in quarry and workshop	Oil or diesel spill, ground contamination of surrounding area. Material run-off into waterway Potential to cause injury to persons that come into contact with oil or diesel.	A	G	2	Cut-off pumps fitted to diesel re-fuellers. Refuelling SWP SCER-035. Fuel Spill SWP SCER-036. Personnel trained in spill response Appropriate PPE provided to personnel involved in spill clean up Notify appropriate authorities if oil or diesel has spilled into waterway Refer to SDS of product if any injuries occur due to substance	D	F	4	Spill kit on site. Personnel trained in spill response	Land - Water	Quarry Manager	N/A	Emergency Procedure Refuelling SCER-035 Fuel Spill SCER-036	N/A
6	Oil or fuel spillage	Oil or diesel spill, ground contamination of surrounding area. Material run-off into waterway. Potential to cause injury to persons that come into contact with oil or diesel.	A	G	2	Maintenance of equipment Correct storage of oils - spill pallets. Personnel trained in spill response Appropriate PPE provided to personnel involved in spill clean up Notify appropriate authorities if oil or diesel has spilled into waterway Refer to SDS of product if any injuries occur due to substance	D	F	4	Spill kit fitted in storage container. Personnel trained in spill response	Land - Air - Water	Quarry Manager	N/A	Emergency Procedure Refuelling SCER-035 Fuel Spill SCER-036	N/A
7	Dust emissions from Hebden Quarries operations	Contamination to air May lead to injury to person/s if inhaled i.e. lung damage, respiratory issues	D	F	4	Regular auditing of quarry Daily Inspection checklist Review weather conditions Water cart used when required to suppress dust. Quarry is regularly graded as required. Water sprays used on stockpile and yard Sprays on crushing plant and screening plant Personnel Health Monitoring Personnel Occupational Hygiene Monitoring Respiratory PPE available on site and personnel trained in use Personnel on site encouraged to wear PPE during any dusty events when outside cabs of machines	D	H	6	Reporting procedures in place. Procedure includes response requirements.	Air	Quarry Manager	N/A		N/A

This document is UNCONTROLLED when printed

Document Title	Pollution Incident Response Management Plan			Page 8 of 21
Document ID	HEB-PRO-ENV-ERP-001	Version	V-08	
Authorised By	J.CLARKSON	Issue Date	15.11.2021	

Hazard Ref.	Aspect of Business That May Adversely Impact the Environment and/or Harm Persons	Adverse Impact on the Environment and/or Persons	Uncontrolled			Controls Required to Eliminate or Reduce the Environmental Impact	Controlled			Emergency Response - In the event that controls fail	LAWWN	Functions Responsible	Task Review Period Months	Procedure Developed	Task Review Developed
			Consequence	Likelihood	Risk Rating		Consequence	Likelihood	Risk Rating						
8	Fuel emissions from Hebden Quarries plant	Contamination to air May lead to injury to person/s if inhaled i.e. lung damage, respiratory issues	D	F	4	Regular auditing of quarry Daily inspection checklist Maintenance of equipment as per OEM recommendation Report when visual emissions are present. Personnel Health Monitoring Personnel Occupational Hygiene Monitoring Respiratory PPE available on site and personnel trained in use	D	H	6	Reporting procedures in place. Procedure includes response requirements.	Air	Quarry Manager	N/A		N/A
9	Fire i.e. at site, at neighbouring facility, bushfire etc.	Hazardous materials explosion, contamination to air i.e. smoke and pollutants burning, contamination to ground i.e. hazardous chemicals exploding onto ground, injury to humans i.e. breathing in smoke and pollutants could lead to respiratory issues, coming into contact with fire could lead to burns or death, pollutants could enter water ways through smoke or explosion	B	F	2	Site Emergency Plan Site Evacuation Procedure Trained personnel to fight fires Remove hazardous materials from fire where possible Isolate energy sources where possible	B	G	3	Personnel trained in fire fighting Emergency Control Plan	Land	Quarry Manager	12	Emergency Procedure	N/A
10	Flash Flooding	Contamination to waterways from hazardous substances, persons injured i.e. drowning	C	F	3	Site Emergency Plan Site Evacuation Procedure Evacuation Procedure Where possible and safe to do so, relocate any hazardous substances to an area that they will not be effected by the flood i.e. high ground	C	G	4	Emergency Control Plan	Water-Land	Quarry Manager	12	Emergency Procedure	N/A
11	Site wide electrical failure	Unable to process material correctly Unable to suppress dust Unable to access PIRMP in an emergency Unable to call Emergency contacts	C	F	3	Site Emergency Plan Works to cease in event of site wide electrical failure if necessary In case of electrical failure, contact electrical company PIRMP available as hard copy Self-Operating Plant Diesel Watercart Mobile Phones	C	H	5	Emergency Control Plan	Air	Quarry Manager	12	Emergency Procedure	N/A

This document is UNCONTROLLED when printed

Document Title	Pollution Incident Response Management Plan			Page 9 of 21
Document ID	HEB-PRO-ENV-ERP-001	Version	V-08	
Authorised By	J.CLARKSON	Issue Date	15.11.2021	

Hazard Ref.	Aspect of Business That May Adversely Impact the Environment and/or Harm Persons	Adverse Impact on the Environment and/or Persons	Uncontrolled			Controls Required to Eliminate or Reduce the Environmental Impact	Controlled			Emergency Response - In the event that controls fail	LAWWN	Functions Responsible	Task Review Period Months	Procedure Developed	Task Review Developed
			Consequence	Likelihood	Risk Rating		Consequence	Likelihood	Risk Rating						
12	Heavy vehicle movement	Dust Noise Collision with hazardous substances Collision with stockpiles Collision with other vehicles Collision with persons Leakage of substances from heavy vehicle i.e. fuel, oil etc. Injury to persons due to dust or noise	C	E	2	Traffic Management Plan Heavy vehicles to operate away from substance storage areas Site speed limit Watercart watering down haul roads Spill kits Trained personnel operating vehicles Dust and Noise complaints investigated Positive communication via UHF Pedestrian and heavy vehicle segregation Hearing protection and respiratory protection available	C	G	4	Reporting procedures in place. Personnel trained in spill response. Spill equipment positioned in yard and sign posted Emergency Control Plan Traffic Management Plan	Land-Air	Quarry Manager	12	Emergency Procedure Traffic Management Plan	N/A
13	Stockpile Collapse	Injury to persons due to stockpile collapsing on them, environmental degradation and damage to infrastructure	C	F	3	Stockpile inspections Stockpiles placed on stable ground 6m maximum stockpile height Stockpile Height Monitored and Managed Materials Handling Procedures Minimal Undercutting	C	G	4	Emergency Control Plan Daily Environmental Checklist	Land-Air	Quarry Manager	12	Emergency Procedure	N/A

This document is UNCONTROLLED when printed				
Document Title	Pollution Incident Response Management Plan			Page 10 of 21
Document ID	HEB-PRO-ENV-ERP-001	Version	V-08	
Authorised By	J.CLARKSON	Issue Date	15.11.2021	

9.0 PRE-EMPTIVE ACTIONS TO BE TAKEN

The following pre-emptive actions are to be taken to minimise or prevent any risk of harm to human health or the environment arising from the activities undertaken at the premises:

Dust event –

- Partly sealed entrance road
- Water cart to provide additional dust suppression as required
- Stockpile dust is controlled with water sprays or watercart
- All crushing and screening plant have water sprays to mitigate dust emissions
- Dust is monitored via the Daily Environmental Checklist
- Audits and observations

Sediment Run Off –

- The fall of the land is designed such that all water is directed to the water sumps
- Audits and observations

Oil, Grease & Fuel Systems –

- All oiling, greasing, and fuelling of plant and equipment is carried out on site in accordance with the relevant safe work procedure
- Appropriate bunding
- Spill kits
- Audits and observations

This document is UNCONTROLLED when printed

Document Title	Pollution Incident Response Management Plan			Page 11 of 21
Document ID	HEB-PRO-ENV-ERP-001	Version	V-08	
Authorised By	J.CLARKSON	Issue Date	15.11.2021	

10.0 INVENTORY OF POLLUTANTS

Pollutant	Use	Maximum Quantity Amount
Diesel	Mobile and Stationery Equipment Fuel	50,000 Litres
Engine Oil	Machine Maintenance	200 Litres
Hydraulic Oil	Machine Maintenance	600 Litres
Grease	Machine Maintenance	180kg

A folder of SDS' for all hazardous or dangerous substances on site can be found in the workshop area and office.

11.0 SAFETY EQUIPMENT

Safety Inventory	Quantity	Location/s
Spill Kits	2	Workshop
Fire Extinguishers	40	Weighbridge Office, Crib Room, Workshop, All Mobile Plant, Batch Plant, Fuel Bowsers, Lab

PPE is supplied to all personnel and additional PPE is located in the office. Plant and equipment are available to create additional bunding in the event of significant sediment runoff or a fuel spill using material available on site. Any material used for bunding will be assessed in accordance with the Waste Classification Guideline for appropriate disposal.

12.0 MINIMISING HARM TO PERSONS ON THE PREMISES PRIOR TO, DURING AND DIRECTLY FOLLOWING AN INCIDENT

In order to minimise the risk of harm to any people who will be on the premises or who are likely to be on the premises should an incident occur, the following is completed/in place:

- Site evacuation procedures in place and personnel are trained in site evacuation procedures (as outlined in HEB-PRO-002- Emergency Control Plan) through site inductions, annual evacuation drills, toolbox talks, review of the HEB-PRO-002- Emergency Control Plan,
- Emergency Assembly areas are in place and clearly advertised to site personnel through the site induction, signage, toolbox talks, annual evacuation drills,
- Audible warning alarms (calling an Emergency over the site UHF) are in place and tested during the annual emergency drill. What to do after hearing the warning is outlined in the site induction, the site emergency procedure and toolbox talks,
- Pollution Incident Response Management Plan is in place and personnel are trained in the PIRMP through annual PIRMP drills, the site induction, toolbox talks, review of the PIRMP, review of the work instruction HEB-WIN-TRN-001 - Pollution Incident Management,
- No personnel are to complete works on site until they have been inducted on the PIRMP and Emergency requirements,
- Fully stocked and regularly checked spill kits,
- PPE,
- Bunded and appropriately stored chemicals,
- Risk assessments for tasks in the form of work procedures, SWMS, JSAs, Take 2s etc.,
- Regular training in tasks, procedures etc. including materials handling and storage, use of PPE, hazard identification etc.
- Safety Data Sheets,
- Supervision,

This document is UNCONTROLLED when printed				
Document Title	Pollution Incident Response Management Plan			Page 12 of 21
Document ID	HEB-PRO-ENV-ERP-001	Version	V-08	
Authorised By	J.CLARKSON	Issue Date	15.11.2021	

- Safety Observations,
- Dust suppression i.e., watercart, sprinklers,
- Corrective actions identified and implemented for all hazards, incidents and near misses on site,
- Site inspections,
- All incidents area investigated,
- Areas are cordoned off during an incident to stop unauthorised access,
- Hard copies of the PIRMP and Emergency Procedures are available in the weighbridge office.

12.1 Evacuation procedure during a pollution incident

Should a pollution incident require evacuation, the Chief Warden (or their delegate) shall call the Evacuation over the UHF radio channel 33 and instruct personnel to proceed to the assembly area. Then the following should occur (as per the HEB-PRO-002- Emergency Control Plan):

- All personnel will follow instructions to evacuate immediately, all operations are to cease (if safe to do so),
- All personnel are to stay calm and evacuate to the assembly area in an orderly manner unless they are requested by the Chief Warden or their delegate to stay and assist with the clean-up of the pollution incident (if safe to do so). When assisting with the clean-up of the pollution incident, this PIRMP should be followed, and any necessary PPE should be worn. SDS of any chemicals should be obtained and referred to,
- All Wardens are to wear a red helmet and a hi-vis vest during an emergency to enable them to be easily identified,
- First Aid Officers are to aid the injured persons and assist them (if safe to do so and instructed to do so by the Chief Warden or their delegate),
- The Chief Warden (or their delegate) will contact emergency services where necessary,
- The Chief Warden (or their delegate) will send someone to the front gate to meet the Emergency services and direct them to the Emergency,
- If you are at the office and it is safe to do so, take the onsite Contractor and Visitor register and take it to the assembly area, ensure you inform the Chief Warden that you have done this. If no one is in the office to take the onsite contractor and visitor register, the Chief Warden (or their delegate) will collect this,
- The Chief Warden (or their delegate) will walk through all safe areas of site (including amenities blocks) directing persons to the appropriate assembly area for headcount. If a delegate has completed the walk through, they must report the result of the check to the Chief Warden.
- The Chief Warden (or their delegate) will take headcount,
- All personnel are to ensure their name has been taken and placed on the register at the assembly area,
- Personnel are not to leave the assembly area unless authorised to do so,
- Upon the arrival of emergency services, the Chief Warden (or their delegate) will advise them of the situation and any missing personnel,
- No personnel are to return to the evacuated building or area until the Chief Warden gives the "All Clear".

In the event of the release of hazardous materials, persons are to proceed up wind of the release. If the assembly area is downwind of the release the Chief Warden (or their delegate) is to relocate all persons to a safer location.

This document is UNCONTROLLED when printed				
Document Title	Pollution Incident Response Management Plan			Page 13 of 21
Document ID	HEB-PRO-ENV-ERP-001	Version	V-08	
Authorised By	J.CLARKSON	Issue Date	15.11.2021	

13.0 MAPS

The site needs to provide a detailed map (or set of maps) showing the:

- Location of the premises to which the licence relates
- Surrounding area likely to be affected by a pollution incident
- Location of potential pollutants on the premises
- Location of any stormwater drains on the premises.

Refer to *attachment 3* for map.

14.0 ACTIONS TO BE TAKEN DURING OR IMMEDIATELY AFTER AN INCIDENT

1. *Communicate the hazard*

Immediately notify others working in the area, the Chief Warden, and the Quarry Manager of the hazard via the UHF radio, as per the HEB-PRO-002- Emergency Control Plan. Provide early notification to neighbouring properties, if necessary.

If the situation warrants it, evacuate the area as per the HEB-PRO-002- Emergency Control Plan.

If necessary, call emergency services. When calling emergency services, be sure to inform them which material was spilled and the quantity, so that first responders will be ready to address the situation. Send someone to the front gate to direct the emergency services to the incident.

Ensure that anyone who is injured or has been contaminated is removed from the immediate area and taken to a safe place.

Communication of the emergency to notify all personnel of the situation, as well as any updates throughout and following the situation will be completed over site UHF channel 33 where possible.

Communication will be provided to personnel and neighbouring properties throughout the incident (especially to provide controls that need to be implemented by them to ensure their safety) and following the incident to give the ‘all clear’.

2. *Control the hazard*

If a spill occurs identify the source and assess whether it can be controlled (stopped) in a safe manner. If safe to do so, take immediate steps to stop the leakage and/ or control the spill. This may involve putting small leaking containers into large containers or bins, turning off appropriate valves, putting containers back to their upright position, putting lids on, isolate feed lines, plug leaks etc.

The SDS of the material must be referred to assess how to manage the spill, including what PPE should be worn when dealing with the material.

3. *Contain the hazard*

Do everything you can to contain the spilled material in as small an area as possible to keep it from spreading. After protecting human health, the main priority is to prevent the material from discharging off site.

Liquid spills can often be contained by spreading absorbent materials such as compressed fibre board, fine sand, vermiculite, or clay over the whole spill. In other cases, a shovel or power

This document is UNCONTROLLED when printed				
Document Title	Pollution Incident Response Management Plan			Page 14 of 21
Document ID	HEB-PRO-ENV-ERP-001	Version	V-08	
Authorised By	J.CLARKSON	Issue Date	15.11.2021	

equipment can be used to construct a dam. No matter how small the spill, it is important to stop it flowing into any body of water, including stormwater drains.

Barriers should be utilised around the perimeter of the spill i.e., absorbent booms, absorbent socks/snakes, compressed fibre board, sand, soil, or any other absorbent object, to prevent the emission spreading.

When an emission is on a hard surface, absorbent granules or sand should be used.

Dryorb (absorbent granules) and absorbent socks/ snakes are available in the spill kits around site.

For large spills, use a loader to construct earth bunds around spill or use sandbags. Spread soil on ground to soak up fuel, oil or chemical.

If discharge enters waterway and mixes with water, isolate it by booms.

The area of the spill will be cordoned off to prevent unauthorised access.

If the hazard of concern is dust emission, the sprinklers should be turned on the sources that are emitting the dust and the water cart is to be utilised. If water suppression fails, operations cease until the dust can be minimised to an acceptable level.

4. Clean up the hazard

All appropriate PPE must be worn during the clean-up process.

Where appropriate, spread absorbent material over the contaminated area. Once absorbed, place this material in a drum or other suitable container lined with a heavy-duty plastic bag (available within the site spill kits) and dispose of at the appropriate waste facilities.

Where soil has been contaminated by a severe spill, remove the contaminated soil, and dispose of it at an appropriate disposal site. Cover the area with at least 5 cm of lime, and then with fresh topsoil. Where minor spills result in soil contamination, activated charcoal applied immediately to the contaminated site should be utilised to reduce soil contamination and subsequent plant damage.

All contaminated materials (including absorbent materials, soil etc.) and PPE will be bagged and disposed of in accordance with legislation at the appropriate waste facilities. Be sure to wash your hands and any other areas that may have come in contact with the materials thoroughly. If your clothing can be safely decontaminated and cleaned, follow the appropriate steps. Otherwise, dispose of the clothing.

5. Report the hazard

Contact the relevant authorities as per Section 4 of this Procedure.

As well as contacting relevant authorities, the Quarry Manager must contact the Divisional Manager and the HSEC Coordinator.

6. Investigations and review

The event must be investigated in terms of cause and effect to determine root causes, develop controls to prevent it occurring again and to communicate key findings with personnel. During the

This document is UNCONTROLLED when printed				
Document Title	Pollution Incident Response Management Plan			Page 15 of 21
Document ID	HEB-PRO-ENV-ERP-001	Version	V-08	
Authorised By	J.CLARKSON	Issue Date	15.11.2021	

investigation, the response to the incident should be reviewed to determine if it was in line with this PIRMP.

The EPA may perform their own investigations.

The site is to be preserved until all investigations are complete.

The effectiveness of this PIRMP will be tested annually and one month after reportable pollution incidents.

15.0 STAFF TRAINING, TESTING AND UPDATING THE PIRMP

This plan will be tested and updated on an annual basis and within one month of a pollution incident. The plan will be tested through reviews, desktop assessments and drills and will be recorded on the Pollution Incident Response Test Checklist (see *attachment 1*).

A copy of training records and reviews of the PIRMP are recorded in the SCRIM HSEQ database.

Desktop assessments require site personnel responsible for testing the plan, to select a scenario from the Environmental Risk Register (table 2) and ensure that all the required controls for the scenario are in place. During the desktop assessment environmental control and PPE equipment supplies should be inspected to ensure that they are functional and that there are enough materials to ensure that emissions relating to the scenario can be controlled effectively and safely.

Annual PIRMP drills will be documented and signed off by the personnel members involved. These records will be maintained on site.

All staff will be trained in the PIRMP annually in the form of a Toolbox Talk and records will be maintained on site.

All staff will review the HEB-WIN-TRN-001 - Pollution Incident Management annually and will be inducted 2-yearly which includes important elements of the PIRMP and Hebdon Quarries environmental obligations. Each staff member will sign off on these documents as proof of training and these documents will be maintained within their staff training records.

More senior staff onsite will be prepared for roles that they may fill if management is offsite at time of incident including more in depth PIRMP training.

16.0 RECORD RETENTION AND AVAILABILITY

A copy of all Hebdon Quarry pollution incident response records will be recorded in the SCRIM HSEQ database.

A hardcopy of this plan is available in the office to all personnel. It is also located on the SCE Website www.sce-aust.com. In addition, a copy will be produced to any EPA Inspector/Officer on request.

This document is UNCONTROLLED when printed				
Document Title	Pollution Incident Response Management Plan			Page 16 of 21
Document ID	HEB-PRO-ENV-ERP-001	Version	V-08	
Authorised By	J.CLARKSON	Issue Date	15.11.2021	

17.0 REVISION / TESTING HISTORY

Revision No.	Document Review Date	Revisions Detail	Carried Out By	Approved By
1	Unknown	Document created	Unknown	Unknown
2	08/10/2015	Review as part of completing PIRMP drill	Unknown	Unknown
3	27/05/2016	Review as part of completing PIRMP drill	Unknown	Unknown
4	19/11/2018	Review as part of completing PIRMP drill	JC – Quarry Manager	JC – Quarry Manager
5	04/09/2019	Review as part of completing PIRMP drill	JC – Quarry Manager	JC – Quarry Manager
6	22/04/2020	Review as part of completing PIRMP drill	JC – Quarry Manager	JC – Quarry Manager
7	07/04/2021	Review as part of completing PIRMP drill	JC – Quarry Manager GM - HSE Superintendent	JC – Quarry Manager
8	15/11/2021	Changed PIRMP in line with EPA PIRMP template	JC – Quarry Manager SB – HSEC Coordinator	JC – Quarry Manager

This document is UNCONTROLLED when printed

Document Title	Pollution Incident Response Management Plan			Page 17 of 21
Document ID	HEB-PRO-ENV-ERP-001	Version	V-08	
Authorised By	J.CLARKSON	Issue Date	15.11.2021	

Attachment 1 PIRMP Test Checklist

Date	
Names of people conducting drill	
Site	
Address	
Pollution Incident Scenario	
SCRIM No.	

1. Select an Environmental Incident applicable to the site to test the PIRMP.
2. Conduct a desktop review using the PIRMP Test Checklist.
3. Sign off the checklist, scan and send to the HSEC Coordinator.
4. HSEC Coordinator / Quarry Manager will make amendments to the PIRMP.
5. Quarry Managers to hold a toolbox talk with staff on the details of the PIRMP.

Are contact details current?	Yes/No
Individuals responsible for activating the plans and managing the response	
Individuals to notify & relevant authorities (Emergency Services, EPA, Public Health Unit, Safework NSW, Local Council, Neighbouring Properties)	
Additional Contacts relevant to the licensee's premises, neighbours	
Environmental Hazards and Control Standards	Yes/No
Are the descriptions of environmental hazards up to date?	
Are the potential and likelihood of incidents that could occur still correct and relevant to the site operations?	
Are the pre-emptive actions for risk management of the relevant activity correct and relevant to the site?	
Is the inventory of pollutants (including quantities of pollutants onsite) correct?	
Is the listed safety equipment & PPE correct and up to date?	
Is there a map/s located onsite detailing the following; - The site & surrounding area likely to be affected in the event of an incident - The Locations of storage/ holding points of pollutants	
Are the nature and objectives of staff training set out in the plan?	
Are there details of mechanisms for providing early warnings and regular updates to the owners and occupiers?	
Is there a copy of the plan onsite and up to date?	
Evacuation Drill	Yes/No
Has there been an evacuation drill in the last 12 months?	
Date of last Evacuation Drill?	
Lessons Learnt – post incident debrief	
What worked?	
What improvements did we identify?	

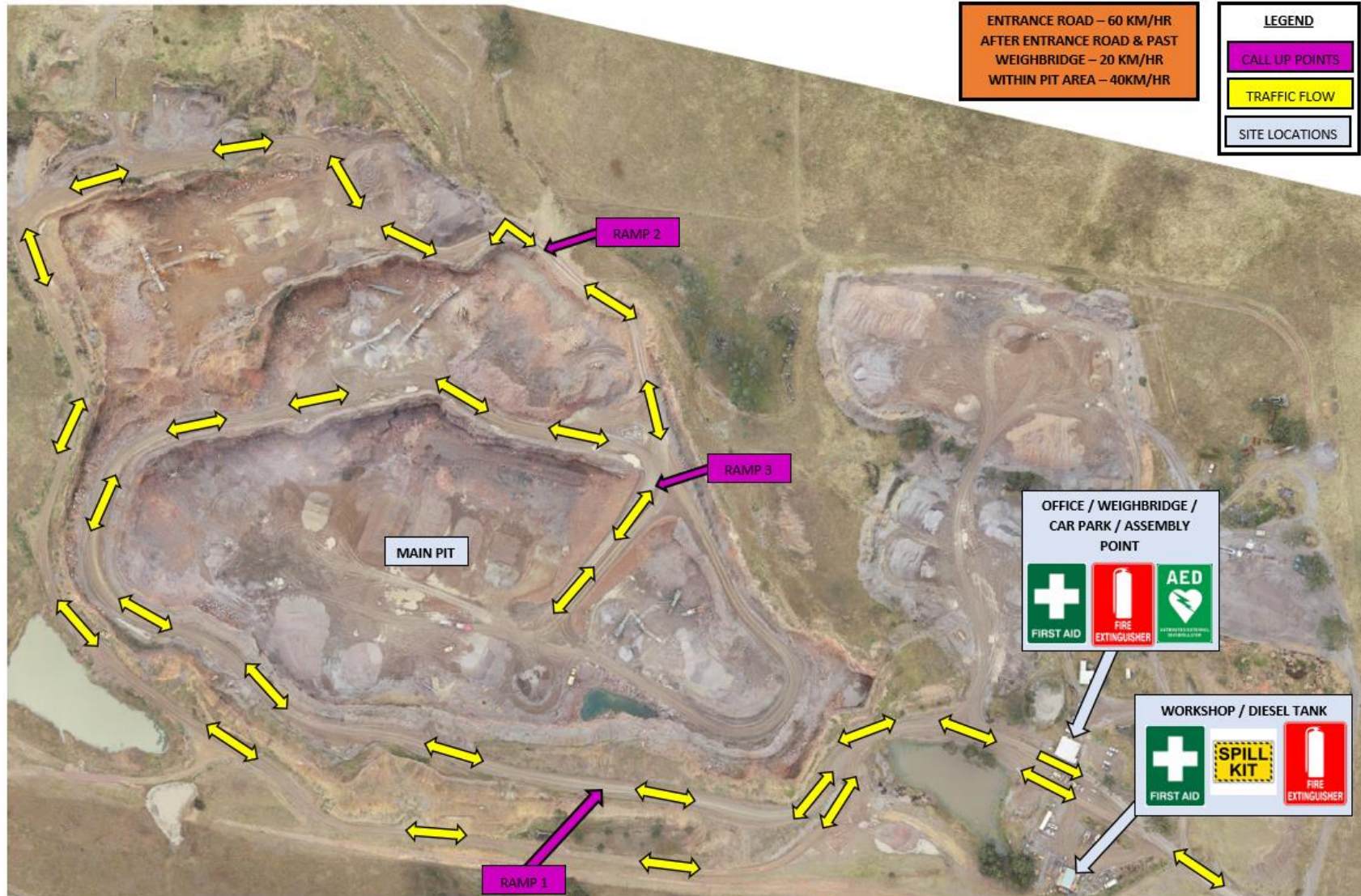
This document is UNCONTROLLED when printed

Document Title	Pollution Incident Response Management Plan			Page 18 of 21
Document ID	HEB-PRO-ENV-ERP-001	Version	V-08	
Authorised By	J.CLARKSON	Issue Date	15.11.2021	

Attachment 2 PIRMP Drill History

Date	Conducted By	Drill Description	Learnings
08/10/2015	Unknown	The watercart started leaking fuel	PIRMP followed.
27/05/2016	PEP Training	A truck was leaving site and stopped on the weigh bridge. While stopped on the weigh bridge, the prime mover started leaking diesel fuel onto the ground. It was coming from the fuel tank overflow.	All equipment wasn't available/ in good working order. Hard hats wrong colour. Foam suppression fire systems to be fixed. The maintenance shed had clutter around the fire equipment. Redundant extinguisher signs near the old fuel tank. Foam extinguisher near the diesel tank needs to be mounted and needs signs.
19/11/2018	Jeff Clarkson	Evacuation	Update PIRMP. Update emergency contact numbers. Update form to add 'scenario' to evacuation plan. Update electric shock protocol. Update Emergency planning procedure. Update SWP emergency procedure.
04/09/2019	Jeff Clarkson	Fire on equipment in quarry	PIRMP followed.
22/04/2020	Jeff Clarkson	Spill of oil in workshop	Spill kits available. PIRMP followed.
07/04/2021	Jeff Clarkson, Geoff Mellon	Oil leak from FEL	Absorbent material on hand to manage oil spill. Bags and shovel at site to clean up spill.

Attachment 3 Map: Hebden Quarry



This document is UNCONTROLLED when printed				
Document Title	Pollution Incident Response Management Plan			Page 20 of 21
Document ID	HEB-PRO-ENV-ERP-001	Version	V-08	
Authorised By	J.CLARKSON	Issue Date	15.11.2021	

